

LTC6UOUT695

LAN CABLE CAT6 SOLID OUTDOOR

Conductor:

Conductor: 23AWG Bare Solid Copper

Insulation: HD-PE,

PVC Jacket available

RoHS, Reach compliant

4 Twisted Pair: 8C

Cabled together, Putting separator X(PE) across, then with one ripcord extruded.

Applications:

10Base-T, 100Base-T (IEEE 802.3)

1000Base-Tx Gigabit Ethernet

Broadband video

Electrical Characteristics:

Impedance: $100 \pm 15 \Omega$

Mutual Capacitance MAX.nf/1000ft:17.1

DC Resistance Unbalance of a pair: 5% MAX.

Pair to Ground: 330Pf/100M MAX.

Propagation Delay Skew: 45ns/100M

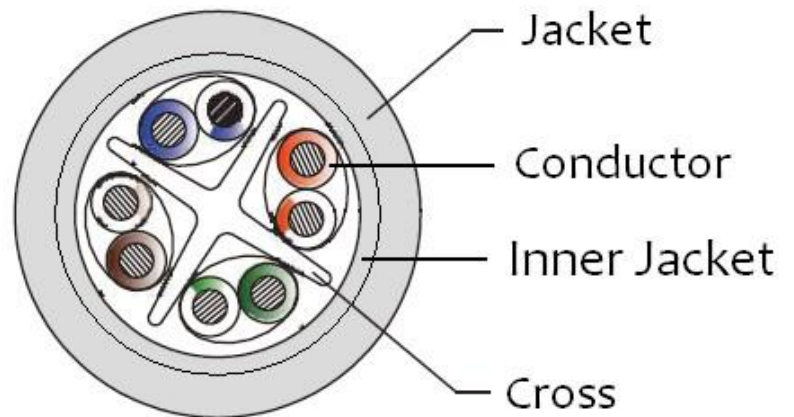
Normal Velocity of Propagation: 68% at 250MHz

Max. Conductor DC Resistance (4/km) 72

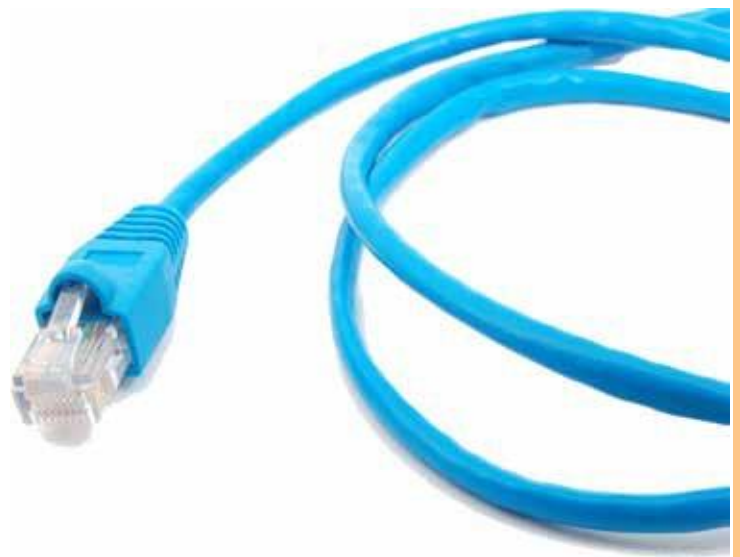
Min. Insulation Resistance (4-m) HD PE: 100M

Dielectric Strength AC-500V/1 Min

*Connectors sold separately



Cat 6 UTP Outdoor



LTC6UOUT695

LAN CABLE CAT6 SOLID OUTDOOR

Electrical Characteristics

Frequency	Insertion Loss	NEXT	PSTNEXT	ACRF	PSACRF	RL	Propagation
(MHz)	MAX (dB/100M)	MIN.(dB)	MIN (dB/100M)	MIN.(dB)	MIN.(dB)	(dB)	MAX (ns/100M)
1	2.0	74.3	72.3	67.8	64.8	20.0	570.0
4	3.8	65.3	63.3	55.8	52.8	23.0	552.0
8	5.3	60.8	58.8	49.7	46.7	24.5	547.0
10	6.0	59.3	57.3	47.8	44.8	25.0	545.0
16	7.6	56.2	54.2	43.7	40.7	25.0	543.0
20	8.5	54.8	52.8	41.8	38.8	25.0	542.0
25	9.5	53.3	51.3	39.8	36.8	24.3	541.0
31.25	10.7	51.9	49.9	37.9	34.9	23.6	540.0
62.5	15.4	47.4	45.4	31.9	28.9	21.5	539.0
100	19.8	44.3	42.3	27.8	24.8	20.1	538.0
200	29.0	39.8	37.8	21.8	18.8	18.0	537.0
250	32.8	38.3	36.3	19.8	16.8	17.3	536.0
300	36.4	37.1	35.1	18.3	15.3	16.8	536.0
400	43.0	35.3	33.3	15.8	12.8	15.9	536.0
500	48.9	33.8	31.8	13.8	10.8	15.2	536.0

Note: the "NEXT" data here are based on "TIA" standard.

